



GREAT BASIN

Regional Project Prioritization Strategy and Plan



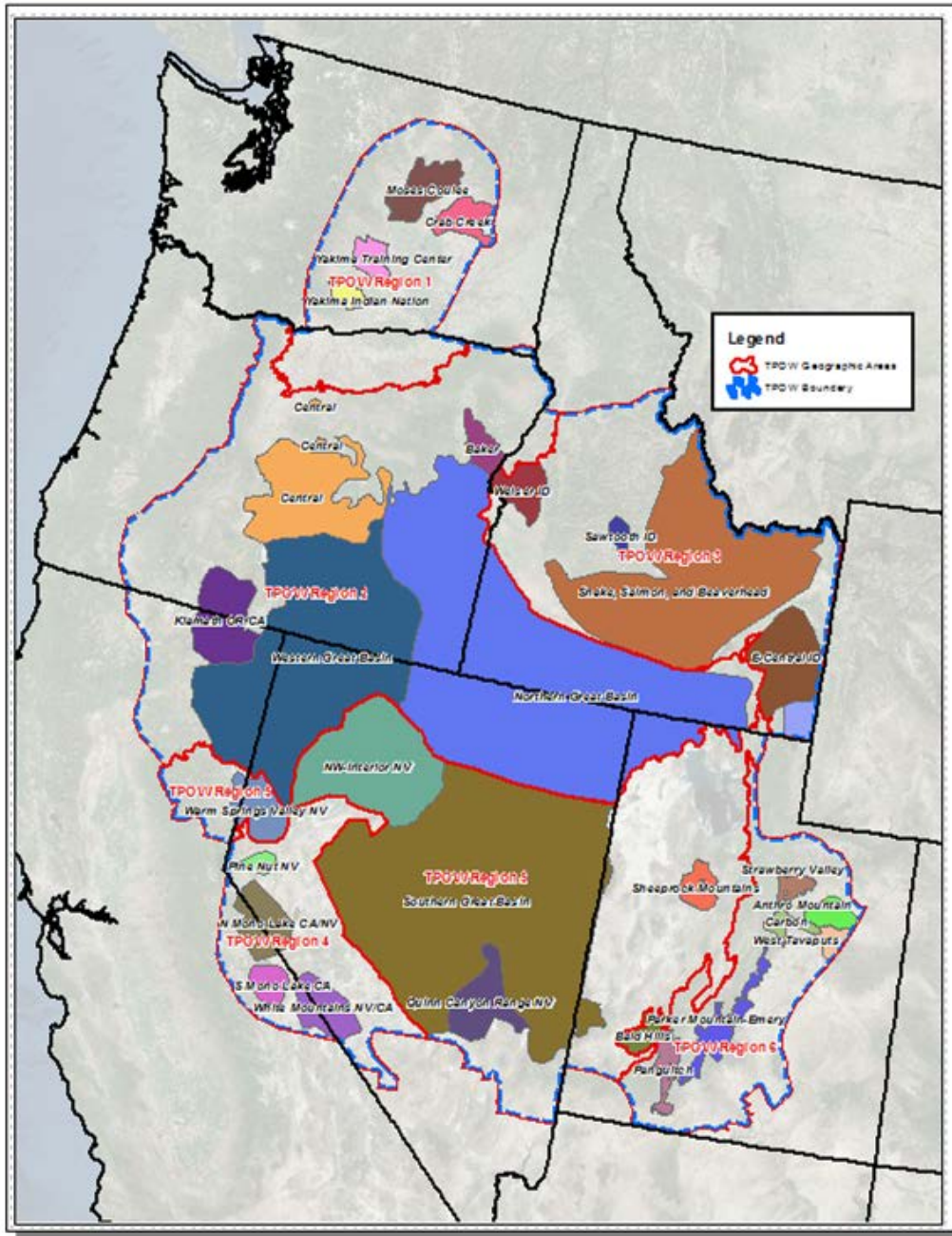
Objectives

- Implement GB Regional IPOW Priorities
 - Protect and Maintain High Quality Habitat and Restoration Investments
 - Improve Existing Habitat
 - Increase Habitat Extent and/or Connectivity
- Provide a Consistent Foundation for Regional Prioritization of IPOW Projects
- Facilitate Cross-Boundary Projects & Funding
- Inform Priority Areas for BLM Projects



Expected Outcomes

- A consistent plan for prioritizing sage-grouse projects & allocating funding
- Increased emphasis on partnerships & cooperation
- Improved guidance for Field Office project development



Project Area Boundaries:

- Outer GB Perimeter
 - WAFWA zones
 - ARMPA boundaries
 - USFWS population areas

- 6 Geographic Areas
 - Level III ecoregions
 - USFWS population areas

Conceptual Model for Great Basin Regional Project Prioritization Strategy

Spatial Criteria and Values

Conservation Priorities (Habitat Quality)

Breeding Habitat

Habitat Management &
Sagebrush Focal Areas

Sagebrush Availability

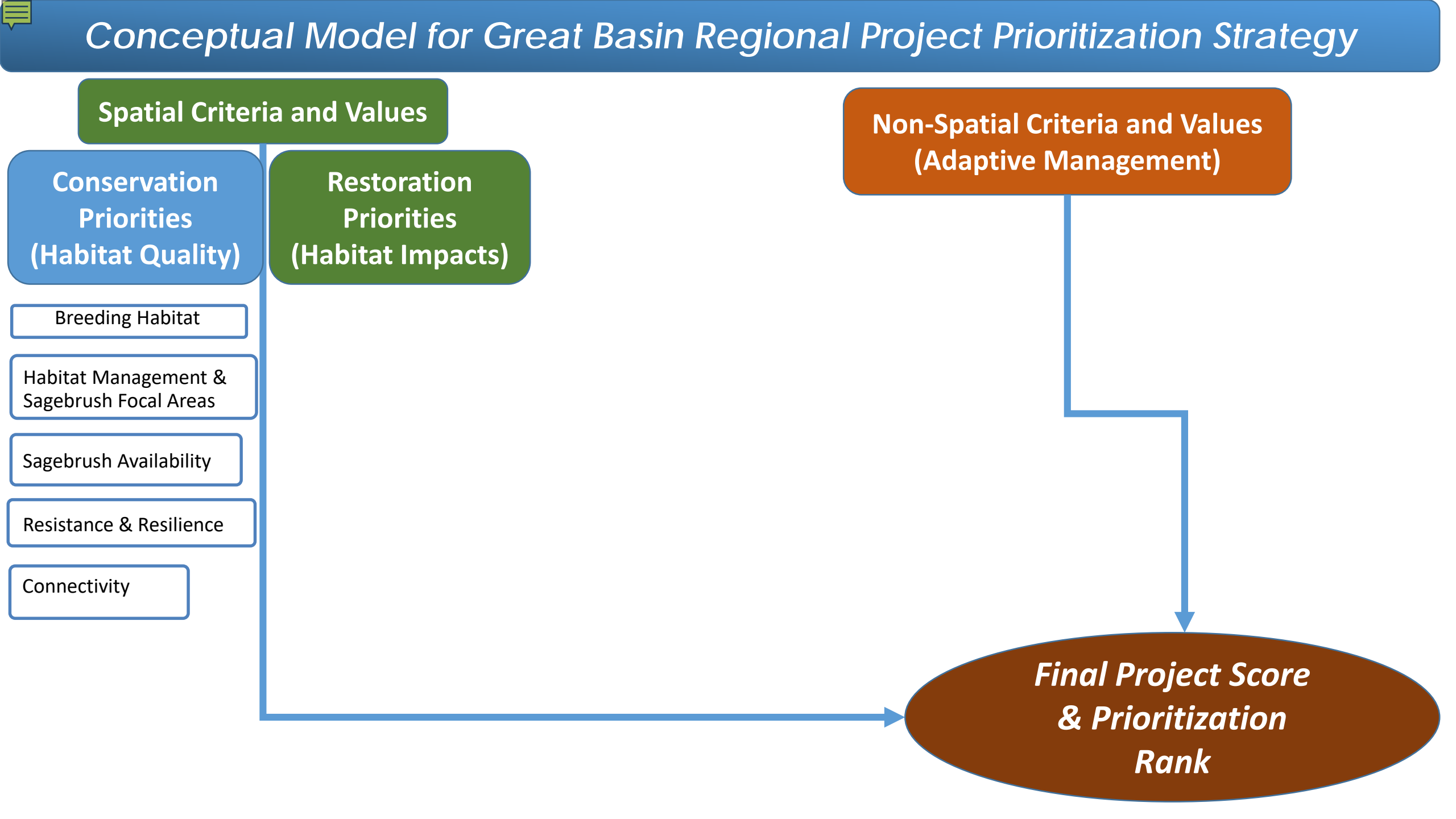
Resistance & Resilience

Connectivity

Restoration Priorities (Habitat Impacts)

Non-Spatial Criteria and Values (Adaptive Management)

*Final Project Score
& Prioritization
Rank*



Conceptual Model for Great Basin Regional Project Prioritization Strategy

Spatial Criteria and Values

Conservation Priorities (Habitat Quality)

Breeding Habitat

Habitat Management &
Sagebrush Focal Areas

Sagebrush Availability

Resistance & Resilience

Connectivity

Restoration Priorities (Habitat Impacts)

Wildfire Risk
(Burn Probability)

Invasive Species
(Cheatgrass)

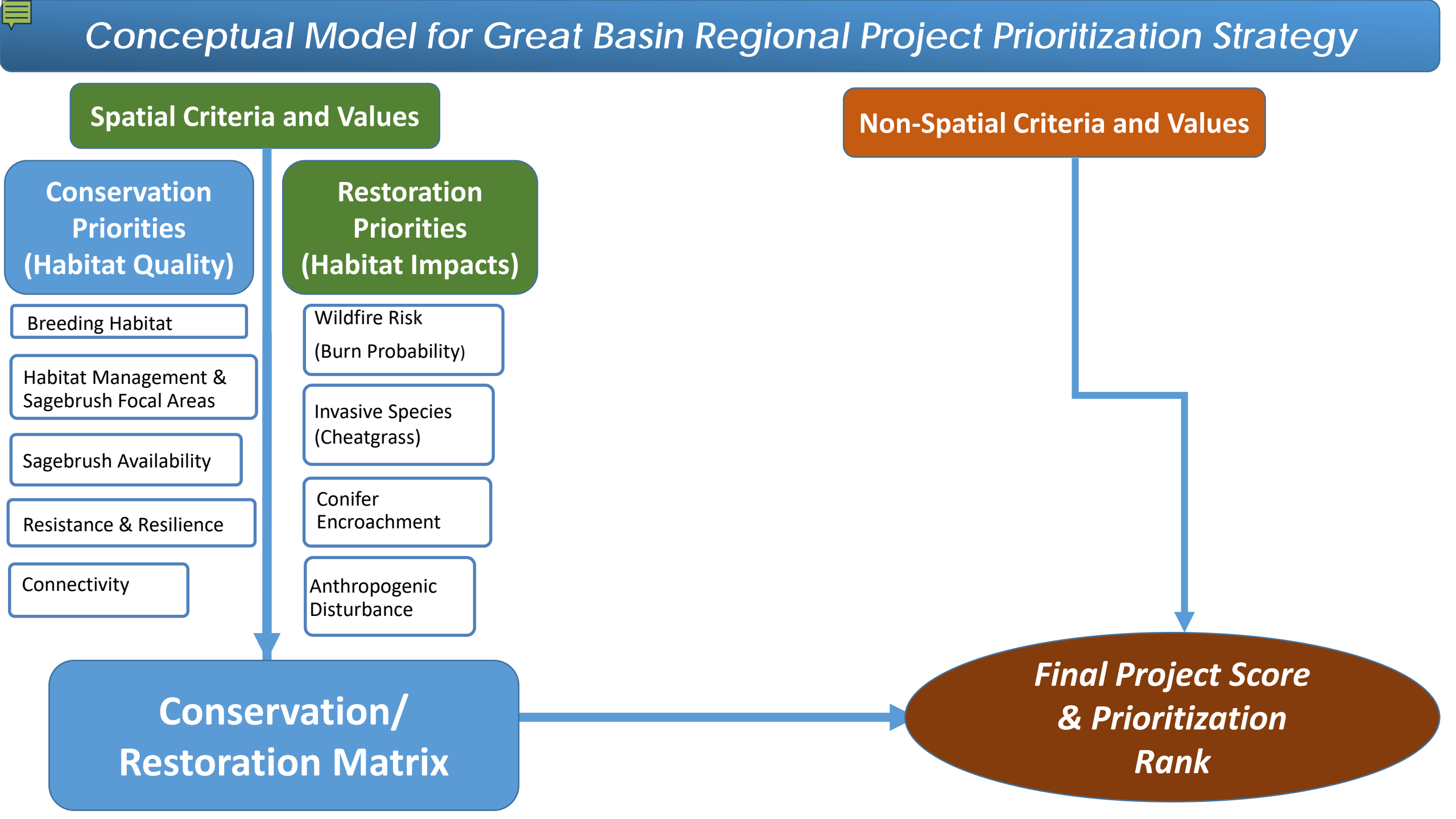
Conifer
Encroachment

Anthropogenic
Disturbance

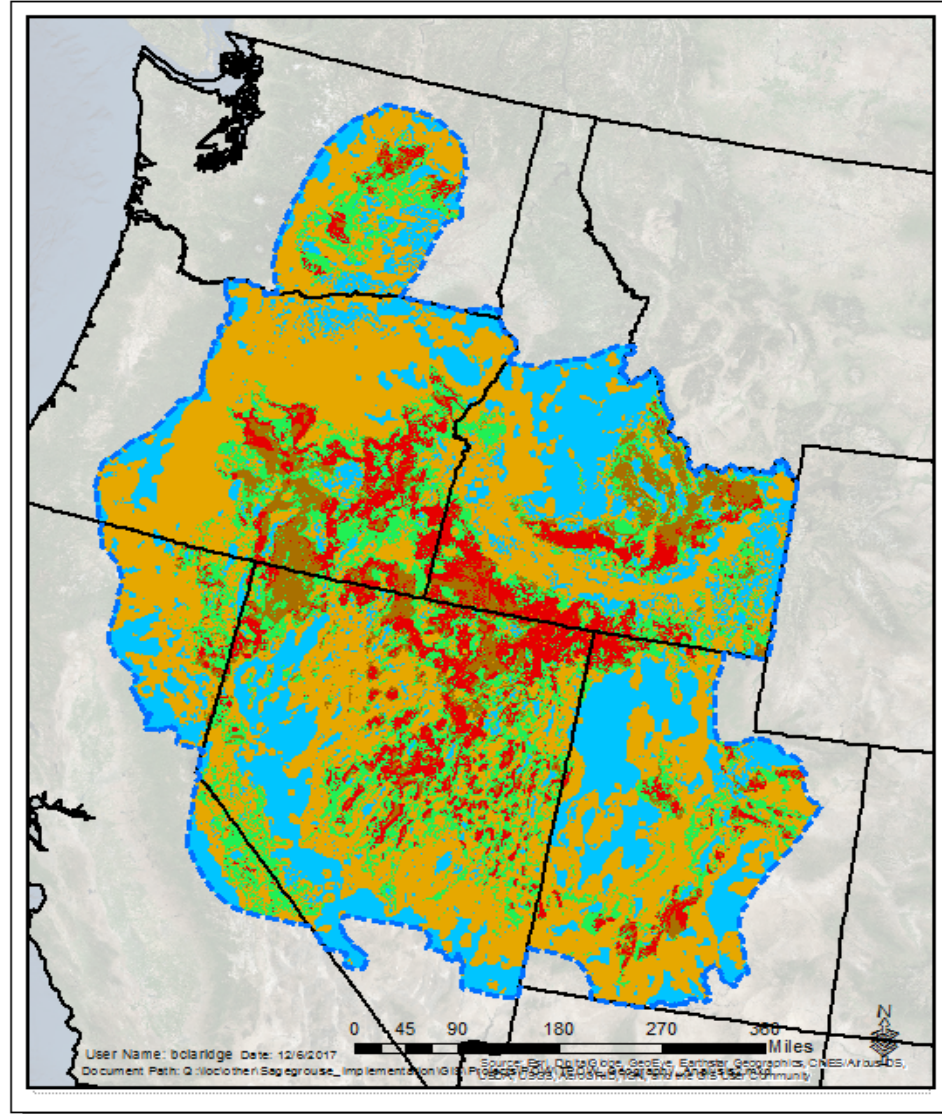
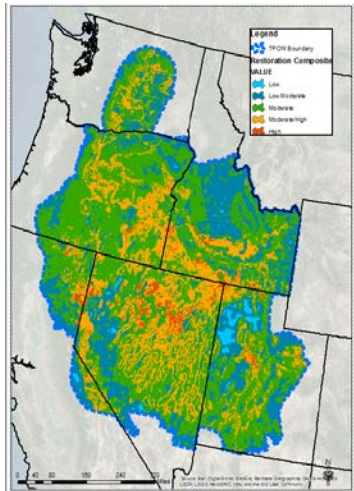
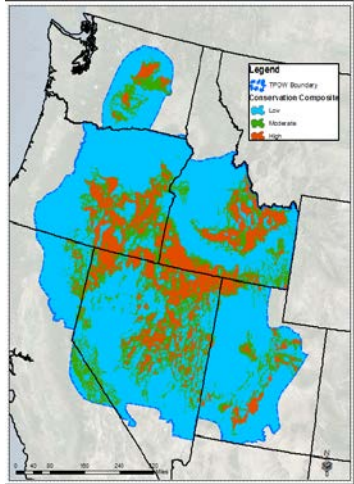
Non-Spatial Criteria and Values

Conservation/
Restoration Matrix

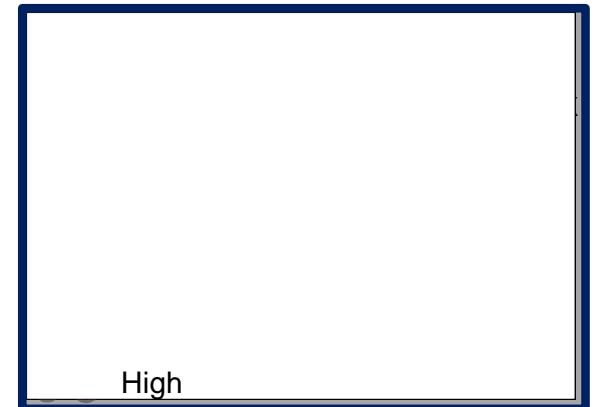
*Final Project Score
& Prioritization
Rank*



Final Prioritization Map (Conservation/ Restoration Matrix)



| | | | | |
|----------------------------------|----------|-----------------------------------|----------|------|
| Restoration (Habitat Impacts) | High | 5 | 10 | 15 |
| | Moderate | 4 | 9 | 14 |
| | Moderate | 3 | 8 | 13 |
| | Moderate | 2 | 7 | 12 |
| | Low | 1 | 6 | 11 |
| | | Conservation (Habitat Quality) | | |
| | | Low | Moderate | High |



Conceptual Model for Great Basin Regional Project Prioritization Strategy

Spatial Criteria and Values

Non-Spatial Criteria and Values

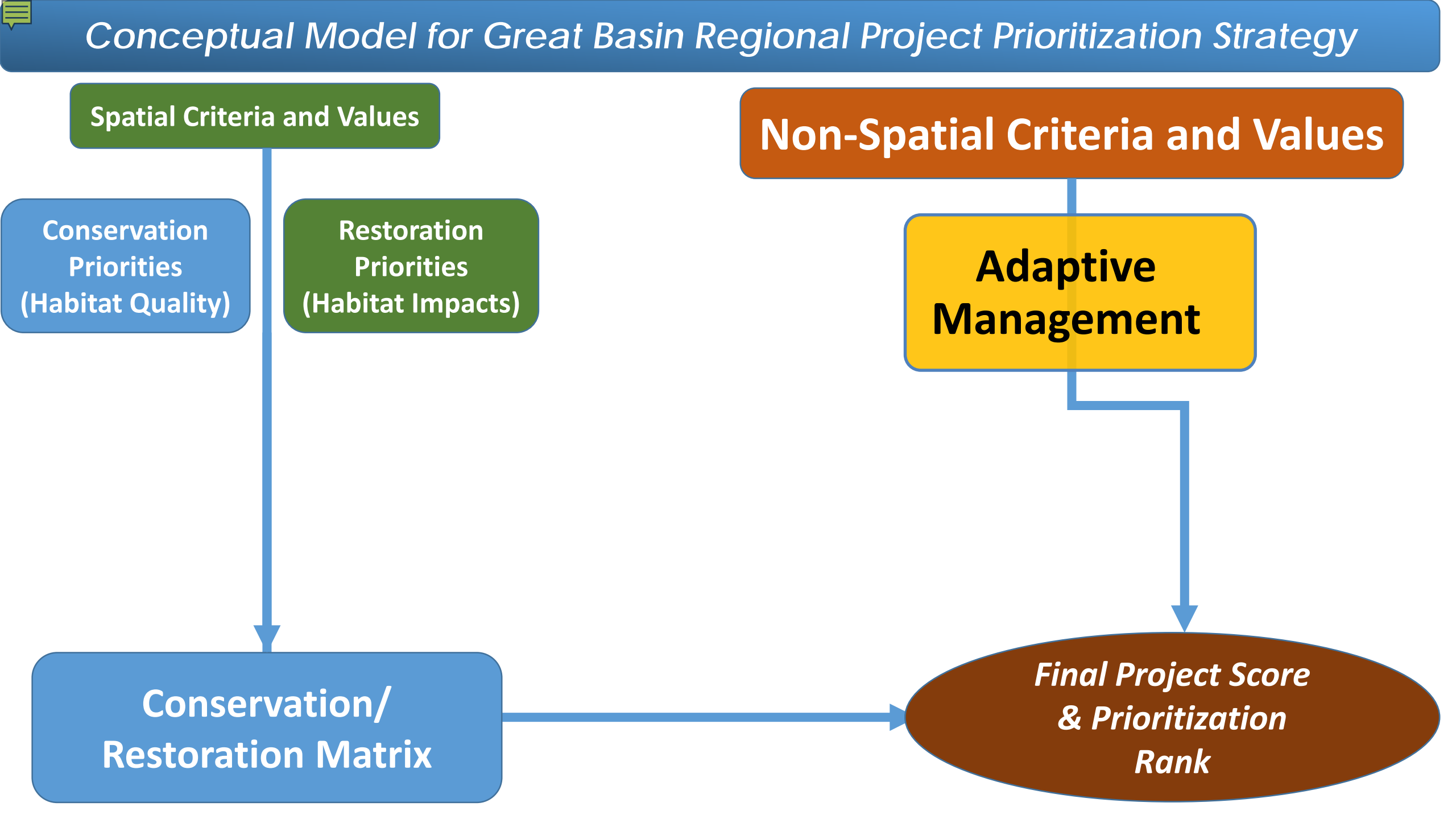
Conservation
Priorities
(Habitat Quality)

Restoration
Priorities
(Habitat Impacts)

Adaptive
Management

Conservation/
Restoration
Matrix

*Final Project Score
& Prioritization
Rank*



Adaptive Management and Project Details

| Criteria | Value |
|--------------------------------------------|-------|
| Adaptive Management | 0-4 |
| *Hard Trigger causal factor addressed- Yes | 4 |
| *Soft Trigger causal factor addressed- Yes | 2 |
| *No Triggers or no causal factor analysis | 0 |

□ Each State Provides with IPOW:

- Polygon of project areas
- Adaptive management information



Regional Post Ranking Considerations

- Project Phase?
- State capacity?
- Alternative funding options?
- Percent of project on public lands?
- Project cost per acre?